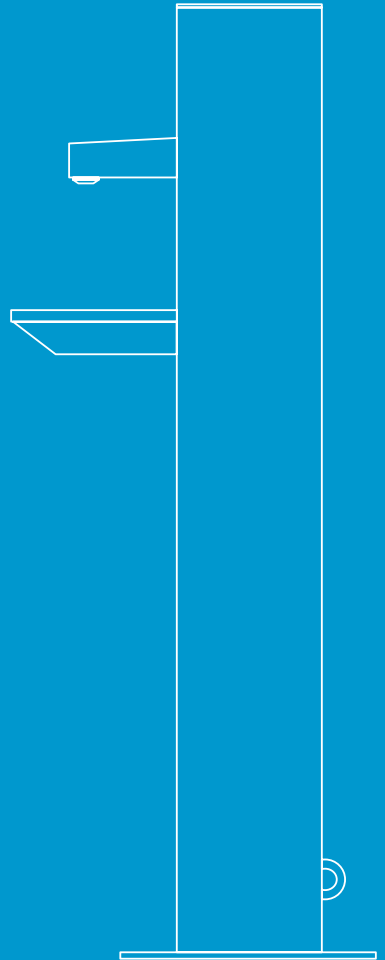


# handi<sup>®</sup>

Hand Sanitiser Dispenser

[itshandi.com](http://itshandi.com)





## CAUTION!

Please take all of the warnings within this manual seriously.

Carefully read through the manual to familiarise yourself with the initial operations.

If this product is resold keep this manual with it.

1 - Product Use	3
2 - Product Safety	4
3 - General Safety	5
3.1 - Safety During Operation	6
4 - Technical Information	7
5 - Package Contents	9
6 - Quick Setup Guide	10
7 - Online Monitoring	12
8 - Device Usage	12
9 - Maintenance	13
9.1 - Cleaning	13
9.2 - Transit	13
9.3 - Replacing Drip Tray	14
9.4 - Battery Charging	15
10 - Contact Information	16
11 - Notes	17

## 1. Product Use



### CAUTION!

Handi is a mobile battery operated hand sanitiser dispenser.

Device must only be used with Handi products.

Device must not be used in potentially dangerous area's.

Device must not be used in dusty environments.

Device must not be used in extreme conditions.

Device must be used in a well ventilated area.

Device must only be used in appropriate surroundings to avoid electrostatic discharge onto dispenser, such as ceramic floors.

If using alcohol based disinfectant ensure that you check with your local authorities regarding any restrictive regulations.

## 2. Product Safety



### CAUTION!

Handi will not be liable for any damages in the case of:

Using third-party refills.

Any defects caused to the device through external mechanical means or over-voltage.

Any alterations made to the device without approval of Handi.

Using the device for purposes other than those originally intended.

### 3. General Safety



#### CAUTION!

Repairs must only be performed by Handi employees or personnel authorised by Handi. Hazardous situations may occur if repaired by non-experts. If a repair is needed or an error occurs contact the manufacturer.

Place the device on a flat, dry and splash proof area.

Children should be supervised when using the device.

Individuals with physical, mental or sensory impairments should be supervised when using product.

Device should be mounted on the floor only, it is not suitable for desk or wall mounting.

Do not fill the device or container during transport.

Device is not suitable for substances other than those supplied by Handi.

Device must only be used with supplied battery pack.

You must not use the device if the battery pack has been damaged.

When cleaning turn off the device.

Ensure rubber feet are in position to reduce vibration and noise.

### 3.1 Safety During Operation



#### CAUTION!

Prevent exposure to excessive humidity.

Do not expose device to thermal radiation and direct heat.

Do not submerge device in water.

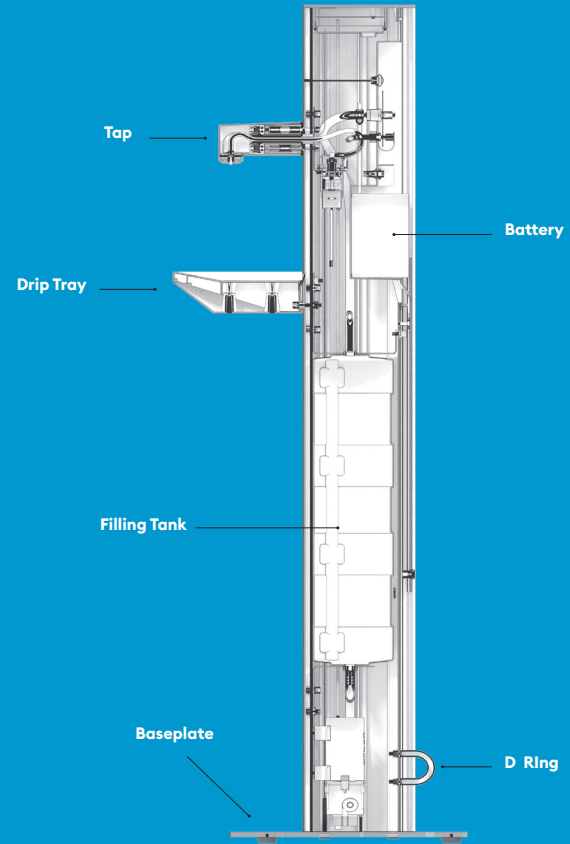
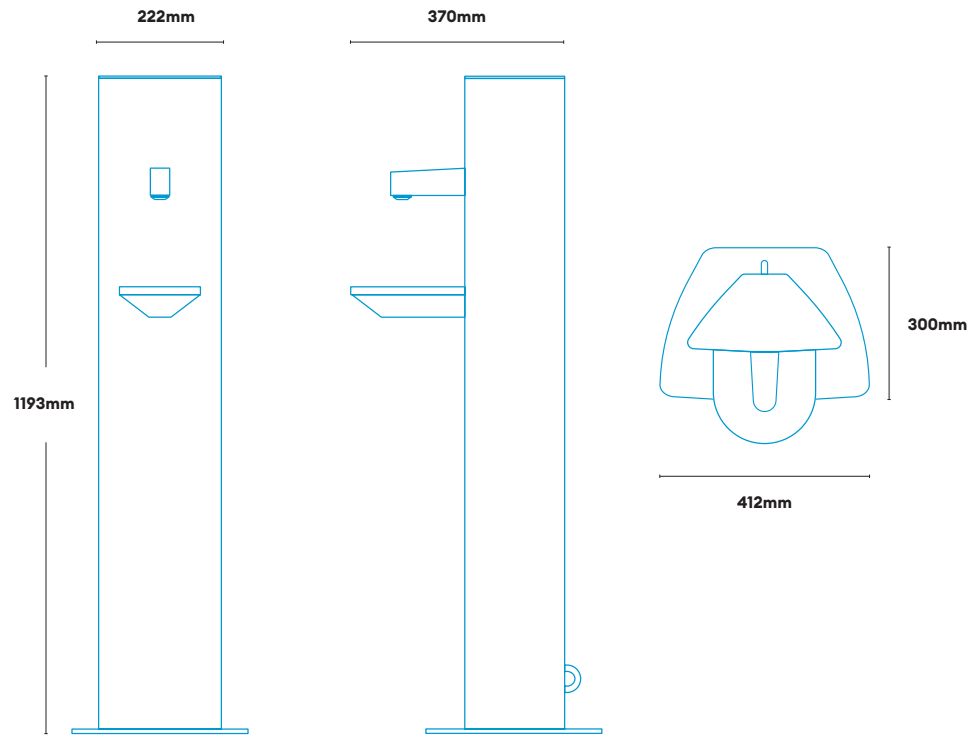
Only fill device with products supplied by Handi.

No parts within the device are suitable to be placed in a dishwasher.

Device should not be cleaned with running water or high pressure cleaners.

Ensure device is standing firmly by checking rubber feet are in direct contact with the floor.

## 4. Technical Information



## 5. Package Contents

1x Assembled Dispenser Body (with battery pack)

4x Rubber Feet and fasteners

4x M8 Screws

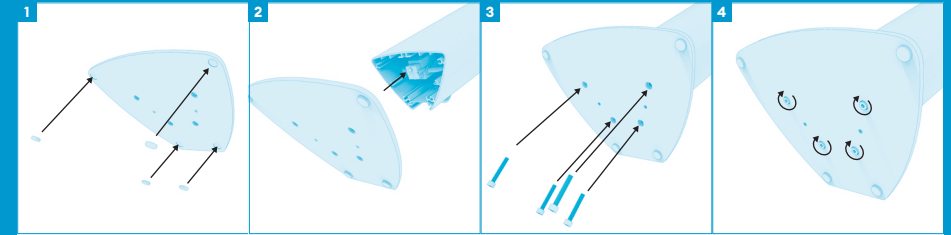
1x Battery Charger

2x Lock Keys

1x User Manual

2x Allen Key

## 6. Quick Setup Guide



### Securing Baseplate

When setting up device for the first time please follow the instructions below:

- 1** Securely fasten rubber feet to the base plate.
- 2** Position base plate using locating dowels as guides.
- 3** Use M8 screws and Allen Key to secure base plate (screws will fasten into extrusion).

*Note: Removal is the reverse of fitting.*

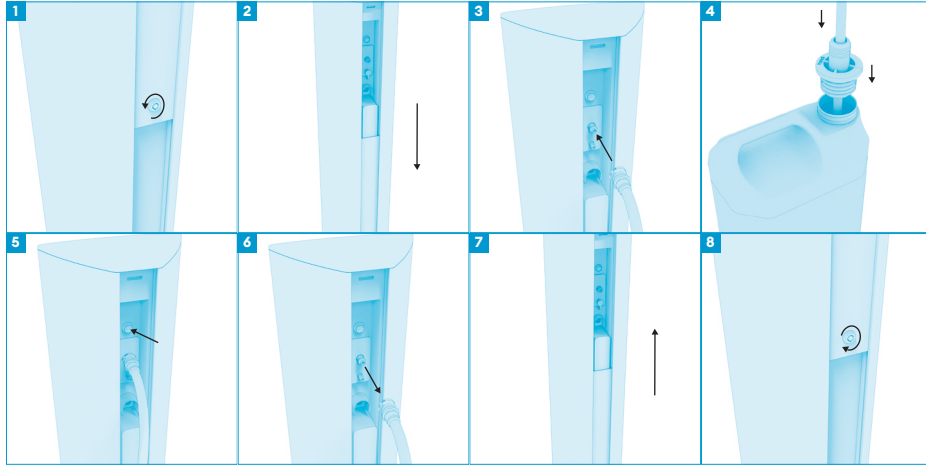


### CAUTION!

Fill with Handi products only.  
Contact Handi to reorder.

*Handi are not responsible for damages caused by filling with unknown products.*

## 6. Quick Setup Guide Continued



### Filling Device

- 1 Unlock rear cover using lock key.
- 2 Slide service door down.
- 3 Remove transport cap and then connect one end of the hose to the device.
- 4 Connect the other end of the hose to the container.
- 5 Press the button on the back to start the pump. You will hear the pump start and the container will begin to empty.
- 6 When pump stops the tank is full. Remove the hose from device and container.
- 7 Slide service door up.
- 8 Lock the service door by pressing centre pin.

## 7. Online Monitoring

Go to [itshandi.com](https://www.itshandi.com) to monitor devices online.

*Note: Online services can be used to monitor battery level, fluid level and more.*

## 8. Using Handi Dispenser

- 1 Position your hands under the tap. Device will then automatically dispense a fixed amount of disinfectant.
- 2 Rub disinfectant in your hands for about 30 seconds.



## 9. Maintenance

### 9.1. Cleaning

Regularly wipe down the exterior surfaces using a regular surface cleaner. You should not use aggressive chemicals to clean the dispenser.



To avoid the dispenser accidentally operating turn off the device before cleaning.



Drip tray should be wiped clean as part of normal cleaning procedure.



Never submerge the dispenser or let it be exposed to water jets.



Do not clean any parts of the dispenser in a dishwasher.

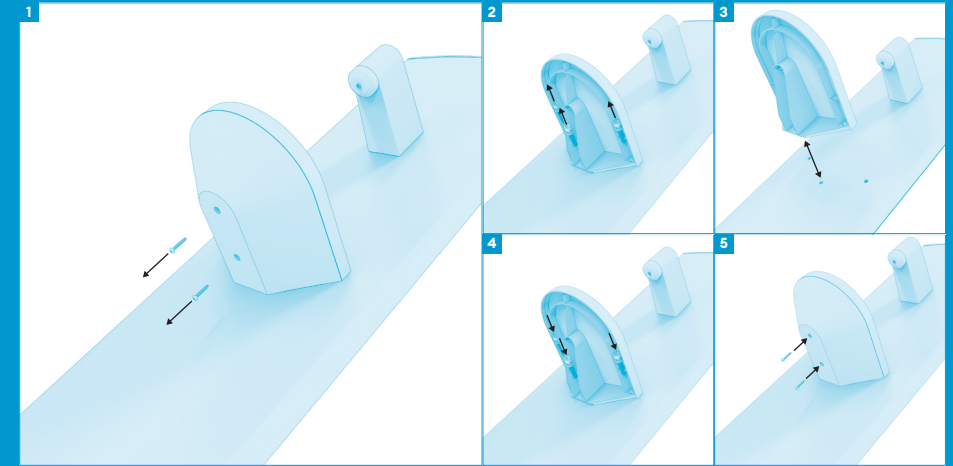
### 9.2. Transit

Take care when transporting dispenser.

The dispenser weighs approximately 18kg, lift only with assistance.

Ensure transport cap is in fitted and that the machine is turned off.

### 9.3. Replacing Drip Tray



In the event of damage to the drip tray or needing replacement contact Handi and follow these steps:

**1** Remove 2 retaining screws from the underside.

**2** Remove 3 x M6 screws and washers securing the drip tray to the device.

**3** Remove drip tray and replace with the new one.

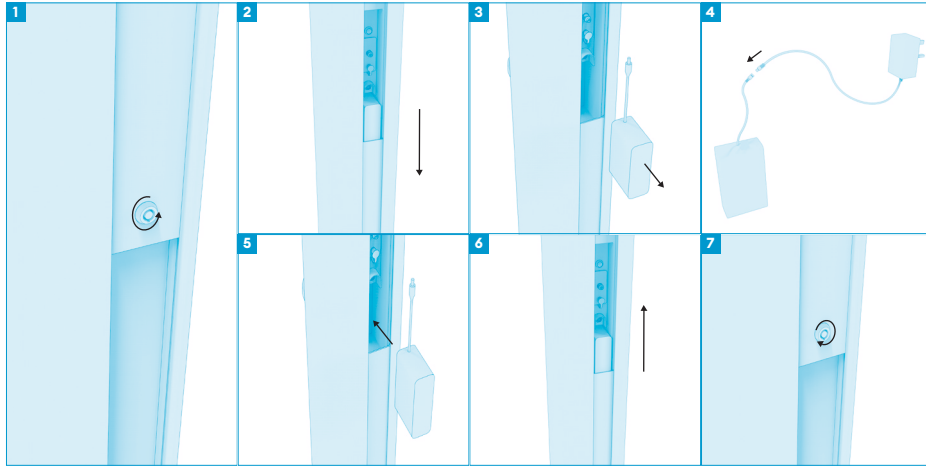
**4** Secure M6 screws through the drip tray to attach to device.

**5** Place bottom half of drip tray and replace retaining screws.

*Note: Do not over tighten screws.*



## 9.4. Battery Charging



**1** Unlock rear cover and turn the device off.

**2** Slide service door down.

**3** Unplug and remove battery pack from device.

**4** Plug the battery pack into the battery charger and leave until fully charged.

**5** When finished charging, reposition battery pack and plug in wires.

**6** Slide up the service door.

**7** Lock the service door by pressing centre pin.

*Note: LED on charger will indicate when it is fully charged.*

## 10. Contact Information

For all technical enquiries please contact us directly at:

Handi Technology Ltd

Beacon House,

Beacon Hill,

Penn,

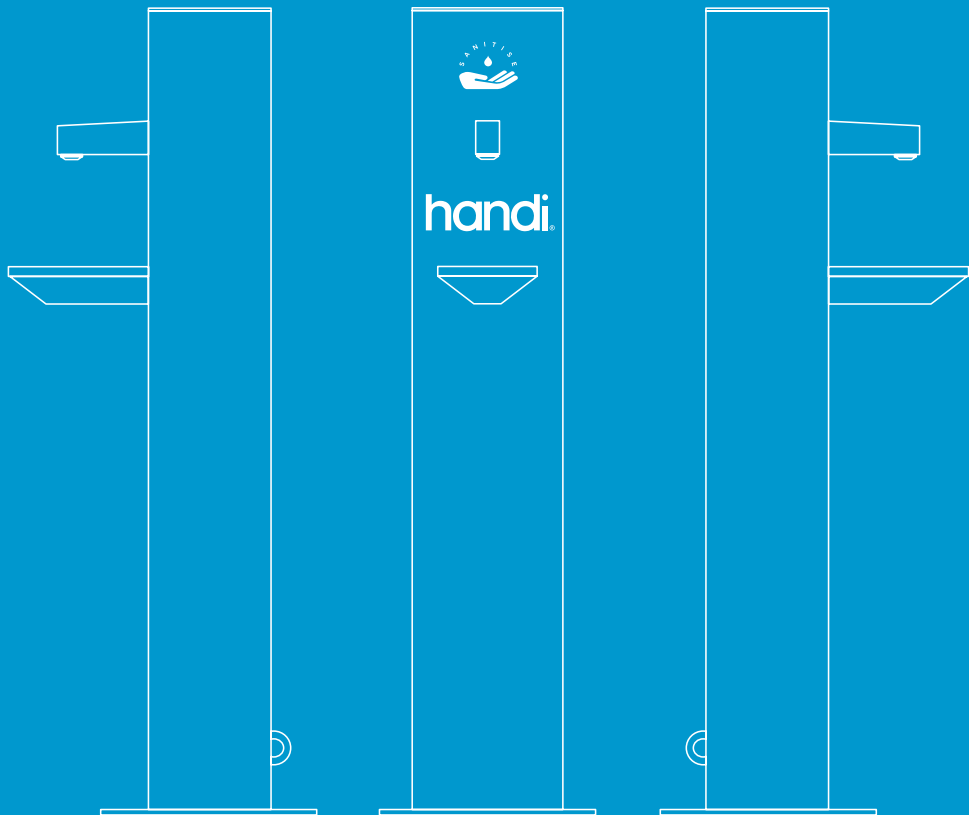
HP10 8ND

United Kingdom

[itshandi.com](http://itshandi.com)

## 11. Notes

## 11. Notes



CE

Made in China